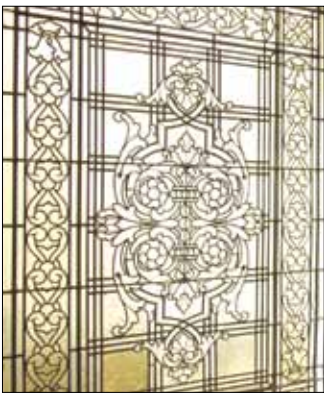




3880 CLAY STREET, SAN FRANCISCO

CLASSIC ARTS AND CRAFTS WITH  
CONSUMMATE MODERN LUXURY

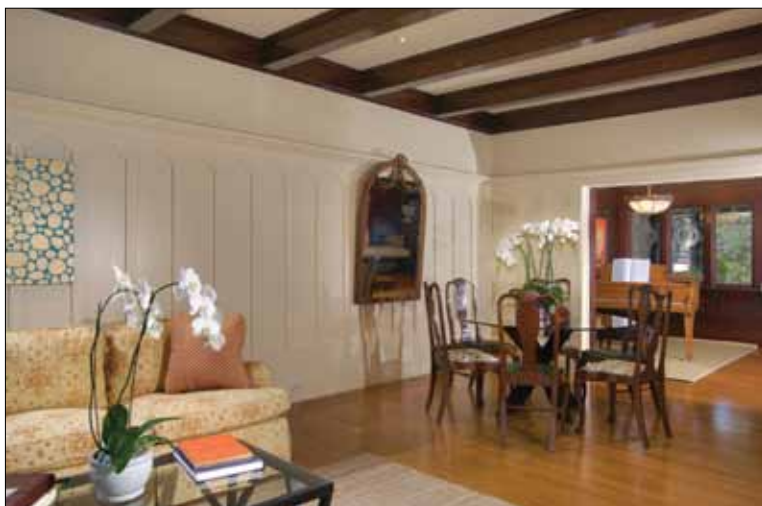




Located in the prestigious Presidio Heights neighborhood, this classic San Francisco home was designed by renowned architect Sidney B. Newsom and extensively renovated in 1999 with complete respect for its circa 1907 heritage. Newsom has many fine homes to his credit including 1 Presidio Terrace and 2698 Pacific Avenue. Beginning

with the rich details of the home's distinguished Arts and Crafts architecture – including fine hardwood floors, stunning leaded glass windows, and refined millwork – an array of luxurious elements have been seamlessly integrated for consummate modern comfort. At the heart is a welcoming reception parlor that introduces the original architectural details. From here, the main living areas extend – a grand living room with fireplace, inviting dining room, ideal as a family room as well, and an intimate library nook. Catering it all is a masterfully remodeled kitchen certain to please the most demanding chef with its commercial-quality range, which stands ready for epicurean feasts, marble countertops, and designated bar or butler's area. A separate breakfast area is perfect for casual meals while overlooking the greenery of the tranquil rear garden/patio.





The transformation continues on the upper two levels where 5 bedrooms plus an office, 4 full baths, and a half-bath provide luxurious accommodations for family members or guests. Bathrooms are beautifully appointed with quality finishes and fireplaces enhance the ambiance in two of the bedrooms including the master quarters. A top-floor family room/recreation room adds flexibility for media, play, or entertaining needs. Augmenting all this is a private walkout garden/patio for fresh-air enjoyment and a two-car tandem garage for the ultimate convenience in city living. And, just blocks-away, the tranquil green belts of The Presidio, Julius Kahn Playground, and upscale shopping and dining await.

# Summary of the Home

- Beautifully updated 4-level residence with original Arts and Crafts detail
- 5 bedrooms, 4 full baths, and 2 half-baths
- Hardwood floors throughout, many with detailed feature strips including celtic designs
- Exquisite glass and iron front door with operable side light opens to a reception parlor where richly stained millwork and paneling is introduced; leaded glass windows brighten an alcove ideal for a grand piano
- A handsome staircase wraps around banquette seating and past towering leaded glass windows; a nearby half-bath services the main floor
- An intimate library, lined with bookshelves, is steps down from the foyer
- The south-facing living room is classically elegant with exposed ceiling beams, wainscot paneling, and a tiled platform with fireplace flanked by windows with banquette seating
- Inviting dining room, ideal as a family room as well with wall of windows and French doors opening to the rear garden patio
- Fabulously remodeled chef's kitchen with marble slab counters, butler's area, desk center, and stainless steel appliances including a commercial-quality gas range complete with both griddle and grill; a separate breakfast room opens to the rear garden/patio
- Second-floor master suite with fireplace, walk-in closet, and luxuriously remodeled, sky-lit bathroom with glass-enclosed whirlpool tub and shower
- Two bedrooms on the second floor share a bathroom with tub and overhead shower; a fourth bedroom with fireplace is serviced by a full bath with tiled shower
- The third floor begins with a spacious light-filled family/recreation room with paneled cathedral ceiling, generous fireplace, and cityscape vistas to the west; a comfortable office (potential bedroom), half-bath, additional bedroom, and full bath with shower complete this floor
- Basement area with 2-car tandem garage, wine storage, laundry and workout areas and significant storage
- Tranquil rear landscaped garden/patio in a fully enclosed private setting



Offered at \$4,600,000

For additional photos please visit:

[www.3880Clay.com](http://www.3880Clay.com)

The information contained herein, including square footage or acreage, has been provided, by various sources which may include the seller, public records, MLS or others. Pacific Union has not verified or investigated the accuracy of this information. Prospective buyers are advised to conduct their own investigation of the property and the information contained herein, utilizing licensed professionals where appropriate, before purchasing this property. Photography by Vince Valdes. ©Marketing Designs, Inc. 650.802.0888 • marketingdesigns.net



Committed to Client Success

Steven M. Gothelf

415.345.3063

[sgothelf@pacunion.com](mailto:sgothelf@pacunion.com)

[stevegothelf.com](http://stevegothelf.com)

DRE# 00709006

