

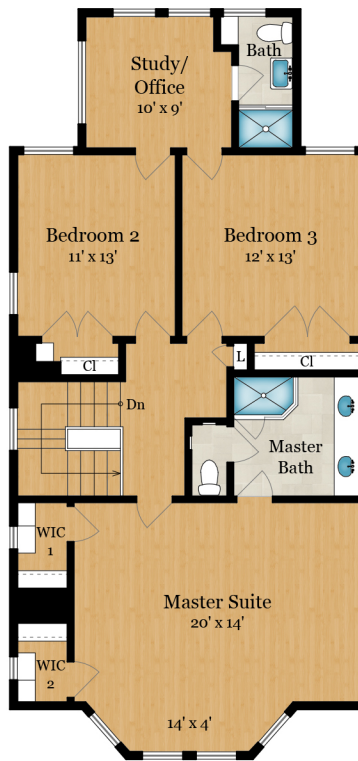
# 118 28TH AVENUE

SAN FRANCISCO, CA 94121



**MAIN LEVEL**  
1,340 SQ FT

**UPPER LEVEL**  
1,155 SQ FT



**LOWER LEVEL**  
750 SQ FT - Finished  
460 SQ FT - Unfinished

**Estimated Total Finished  
Square Footage: 3,245 SQ FT**

Plus 400 SQ FT Garage on Lower Level  
Plus 60 SQ FT Mech Room on Lower Level

\* Estimated Total Finished & Unfinished Square Footage: 3,705 SQ FT