

2773 CLAY STREET

SAN FRANCISCO, CA 94115

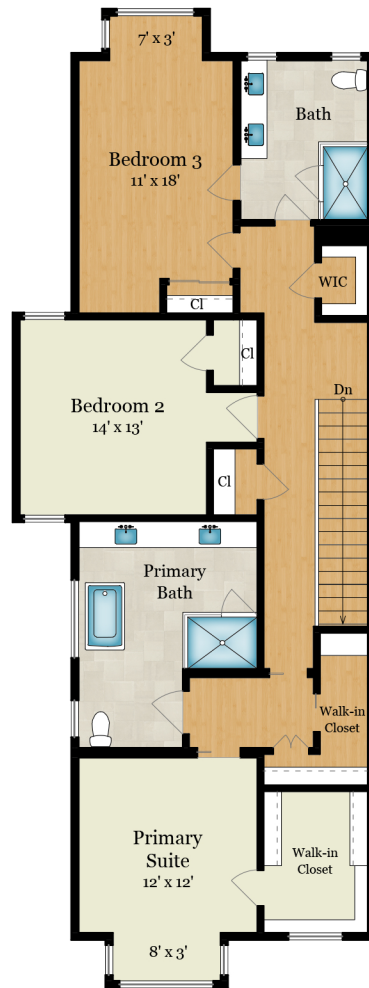


MAIN LEVEL
1,375 SQ FT

Estimated Total Finished Square Footage: 3,525 SQ FT

Above-Grade: 3,525 SQ FT Below-Grade: N/A
Plus 470 SQ FT 2-Car Garage on Lower Level
Plus 85 SQ FT Storage on Lower Level
Calculated per ANSI Standard Z765-2003.

* Estimated Total Finished & Unfinished Square Footage: 4,080 SQ FT



UPPER LEVEL
1,410 SQ FT



LOWER LEVEL
740 SQ FT