

1501 FILBERT STREET #PH7F

Cow Hollow | San Francisco  
Presented by Adam Gothelf

---

THREE-STORY DESIGNER PENTHOUSE  
INCLUDING ROOFTOP TERRACE





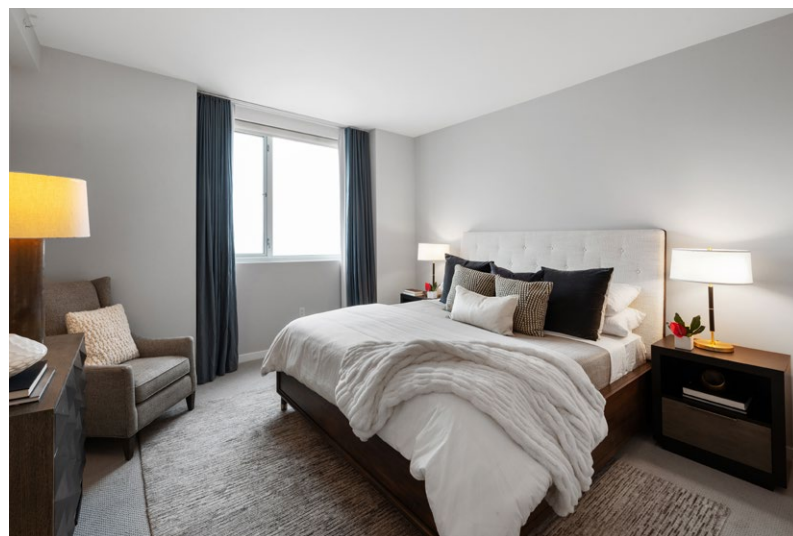
Experience the ultimate in contemporary urban living at this penthouse view condominium in Cow Hollow. Built in 2014, the Amero is a sleek modern gem featuring an inviting secure lobby enhanced by a linear gas fireplace, perfect for socializing. Entered via the seventh floor, this two-story penthouse includes an exceptional third-floor private rooftop terrace with western views to the Golden Gate Bridge and Palace of Fine Arts. A secure gate opens to a connecting community terrace with two barbecues, sweeping City vistas, and tremendous space for large gatherings. Inside, the condo takes full advantage of its western orientation, capturing landmark views from each level. The main level, with al fresco balcony, embraces an open concept by blending living, media, dining space, and a sleek modern kitchen. The kitchen shines with its interplay of lacquered and wood-grain cabinetry, quartz countertops, and upscale stainless steel appliances. The extra-long island with counter seating serves as a central hub for gatherings. A large guest powder room completes the level.







The lower level is dedicated to two bedrooms and two baths, including a sumptuous primary suite with spa-like bath, plus there is a convenient laundry center. Thoughtful amenities such as remote-controlled window blinds and individual room-controlled radiant heat operate behind the scenes. Deeded garage parking with EV charging capability and a convenient storage locker add the finishing touch. Centrally positioned on the edge of Russian Hill, this chic condo seamlessly fuses penthouse luxury with unrivaled views, all enriched by extraordinary walkability, as evidenced by its impressive Walk Score of 99.



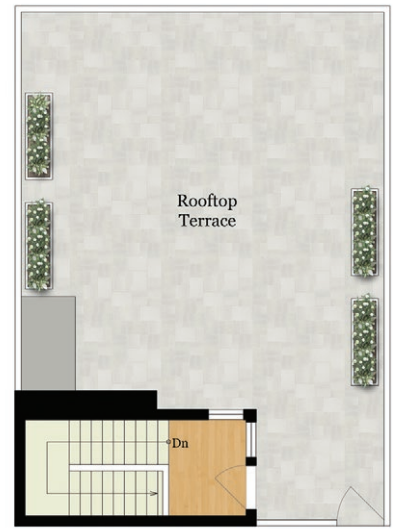




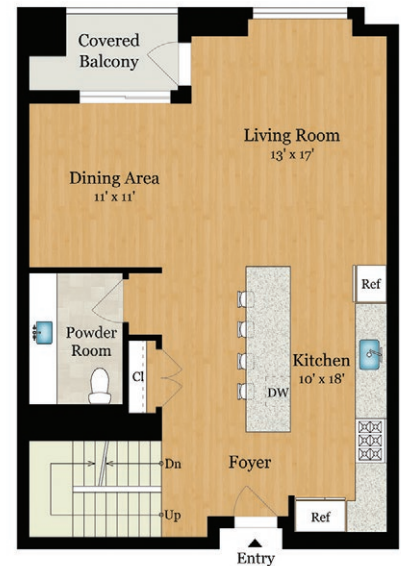
## SUMMARY OF THE HOME

- Two-level penthouse condominium plus private rooftop terrace at Amero built in 2014 in Cow Hollow
- 2 bedrooms and 2.5 baths; approximately 1,634 square feet (per Tax Records)
- Secure main lobby entrance with large central gathering area and linear gas fireplace; an elevator leads to the seventh floor
- World-class Golden Gate Bridge views from every level
- Enter to the open-concept living areas, all unified with lightly hued engineered wood floors; newly painted crisp white walls, track and recessed lighting, and new carpet in the bedrooms
- A sleek modern kitchen introduces the open design with an extra-long island boasting counter seating and waterfall-wrapped quartz counter beneath two clear-glass pendants; combination of lacquered white cabinetry and wood-grain cabinetry tied together with white tile backsplashes in a rectangular pattern
- Stainless steel appliances include a Bertazzoni 6-burner gas range, Bosch microwave drawer, Bosch dishwasher, and paneled Thermador refrigerator
- Living area with oversized media screen plus entire wall of operable and fixed windows with Golden Gate Bridge views
- French doors in the living area and sliding glass doors in the dining area open to a private covered view balcony
- Lower-level primary suite with Golden Gate Bridge views, organized walk-in closet, and en suite bath with dual-sink floating vanity and frameless glass-enclosed bathing area with free-standing tub beneath a ceiling mount filler plus fixed and hand-held shower sprays
- Second bedroom, also with Golden Gate Bridge views, has an organized closet and access to hallway bath with frameless-glass shower
- In-unit stairs to private extra-large rooftop terrace with locked gate to community terrace that has two built-in barbecues and added space for entertaining amid panoramic City views
- Gated garage parking with 1 deeded space, private storage locker, and EV charging station
- Other features include: extra-large guest powder room; concealed stacked Miele washer and dryer on the lower level; remote-controlled blinds on some windows; new carpet on stairs and lower level; radiant heat with individual room controls; large fully customized walk-in closet on the lower level for added storage
- Monthly HOA fee of \$979
- Outstanding Cow Hollow location on the edge of Russian Hill with a Walk Score of 99; just one block to Union Street and Polk Street for shops, restaurants, and cafes

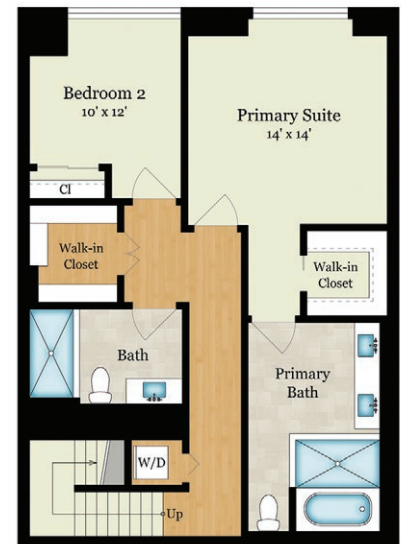
**Offered at \$2,995,000** For additional photos please visit: [www.CowHollowPenthouse.com](http://www.CowHollowPenthouse.com)



UPPER LEVEL



MAIN LEVEL



LOWER LEVEL



**Adam Gothelf**

415.509.5336

License# 01888146

gothelfre@gmail.com

AdamGothelf.com

**Sotheby's**  
INTERNATIONAL REALTY